

WORLD CITY

ustradenumbers.com

2023 U.S.

TRADE NUMBERS

The United States' \$5.31 trillion in two-way trade with the world



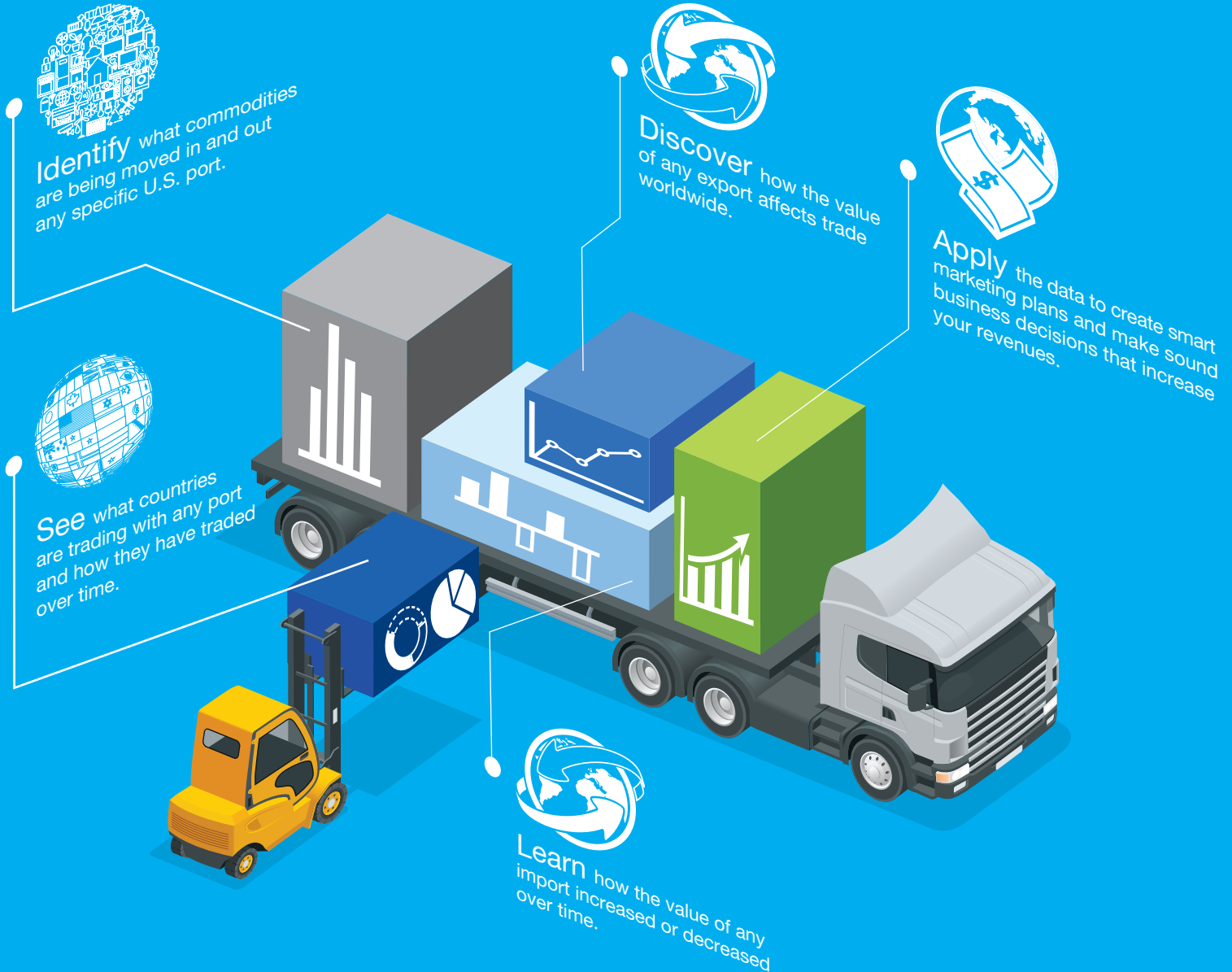
Sponsored
by:



Make sense. Make dollars.

Get a ustradenumbers.com subscription. Make sense of U.S. trade data. Discover insights to drive your business forward.

The ultimate trade tool is at your fingertips – UTradeNumbers.com. Get monthly updates to more than 450 ports at ustradenumbers.com. Upgrade to a higher level subscription to dig deeper, to better understand competitive markets and historical trends. It's not a lot of dollars. But it makes a lot of sense.

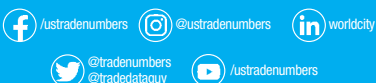


For more information:
305.441.2244
info@ustradenumbers.com

Get access today ▼

USTRADENUMBERS.COM

an on-line, trade tool from: **WORLD CITY**



A \$5.3 trillion record

Exports top \$2 trillion, imports top \$3 trillion

President's Note

Ken Roberts



U.S. merchandise trade topped \$5 trillion in 2022 for the first time. That's impressive since it took the nation 10 years to go from \$3 trillion to \$4 trillion but just four more years to pass \$5 trillion.

Also in 2022, total exports surpassed \$2 trillion and imports surpassed \$3 trillion, both for the first time, according to WorldCity analysis of U.S. Census Bureau data.

The U.S. trade deficit, which first surpassed \$1 trillion in 2021 did so again in 2022.

By value, 39 percent of U.S. trade was an export, 61 percent an import. It had dipped to 38 percent in 2020 and 2021 after 11 consecutive years at 40 percent or greater.

The final 2022 figures were \$5.31 trillion in total trade, \$2.06 trillion in exports and \$3.25 trillion in imports. Total trade increased 15.79 percent over 2021, with exports increasing 17.59 percent and imports increasing 14.67 percent. The deficit ended up at \$1.18 trillion, also a record.

U.S. exports and imports with a number of leading trade partners surpassed

records, including with the top three: Canada, Mexico and China. Those three alone accounted for 43 percent of all U.S. trade, in line with recent years.

Canada's trade with the United States topped \$792.72 billion, the most any country has ever conducted with another country. The total also topped the U.S. record that the two countries had set nearly a decade earlier, in 2014.

For Canada, it was the second consecutive year at No. 1. Rising prices of oil and gasoline were largely responsible for the record trade; Canada sends more oil to the United States than any other country, 57 percent of the 2022 total.

Mexico finished second with \$779.31 billion, surpassing \$700 billion for the first time, after having topped \$600 billion three of the four previous years. Mexico trade is led by automotive, white goods like refrigerators and washing machines, TVs and computer monitors, and energy. It accounted for 11 percent of U.S. oil imports, meaning the two U.S.M.C.A. partners accounted for almost 68 percent of the total.

China, the third-ranked trade partner, has been knocked from its top perch by

the steep and widespread tariffs imposed during the Trump Administration and kept during the Biden Administration. It still topped \$600 billion for the fourth time in the last six years, including in 2018. That was the last year that China ranked first among U.S. trade partners. The 2022 total was \$690.59 billion.

The nation's leading exports and imports are largely petroleum products.

On the export side, the nation's top three were gasoline and other refined petroleum products, oil, and natural gas, including LNG. As recently as 2015, oil ranked as the 28th most valuable export, natural gas at No. 19.

Refined petroleum and oil topped \$100 billion in value for the first time; natural gas narrowly missed.

On the import side, oil was the top import for the first time since 2014 — the year Canada had set the total trade record. Passenger vehicles, which ranked second in 2022, had ranked first since 2015.

Cell phones and related equipment ranked third with computers ranking fourth, both topping \$100 billion.

@TradeDataGuy

our products

WorldCity has been producing TradeNumbers publications since 2001 for airports, seaports and border crossings across the United States. They are published annually in three formats: the Executive Summary format, a full 64-page magazine format, and a handy pocket-sized version. WorldCity also hosts a website, ustradenumbers.com, updated monthly with pages of data for more than 200 countries, more than 1,800 specific export and import commodities, and more than 450 airports, seaports and border crossings. Every month this data is available in port-specific personalized videos. WorldCity syndicates its content to airports, seaports and border crossings, updated monthly. Data for those ports is also "unlocked" and available to all at ustradenumbers.com.

our people

PRESIDENT: Ken Roberts
MANAGEMENT STAFF: Tatiana Panzardi
DATA & WEBSITE DEVELOPMENT: George Avelino
VIDEO PRODUCTION: Hiram Henriquez and Kristian Rodriguez
GRAPHIC DESIGN: Vivian Chavez, Eric Borrazas, Suzette Sullivan, Hiram Henriquez

there's more

DOWNLOAD versions of our publications, including this one, at ustradenumbers.com.

SUBSCRIBE for up to 10 years of data for any export, import, country, airport, seaport or border crossing with a subscription to ustradenumbers.com.

ACCESS sponsored pages, which are open to all, including the pages for Port of Los Angeles, Los Angeles International Airport, Miami International Airport, Port Laredo, Del Rio, Pharr, Eagle Pass, Houston Intercontinental Airport, Port Hueneme, Port Everglades and Mexico. For more information about the Content Syndication program, contact info@worldcityweb.com.

WORLD CITY

www.ustradenumbers.com



[/ustradenumbers](https://www.facebook.com/ustradenumbers)



[@ustradenumbers](https://www.instagram.com/ustradenumbers)



[worldcity](https://www.linkedin.com/company/worldcity)



[@tradenumbers](https://twitter.com/tradenumbers)
[@tradedataguy](https://twitter.com/tradedataguy)



[/ustradenumbers](https://www.youtube.com/ustradenumbers)

TOP 25 COUNTRIES

85.63%
OF ALL U.S. TRADE

KEY

- ▲ Ranking increased 2021 to 2022
- ▼ Ranking decreased 2021 to 2022

Rank change

- 0 01. Canada
- 0 02. Mexico
- 0 03. China
- 0 04. Japan
- 0 05. Germany
- 0 06. South Korea
- 0 07. United Kingdom
- 2 ▲ 08. Vietnam
- 1 ▼ 09. Taiwan
- 1 ▼ 10. India
- 0 11. The Netherlands
- 3 ▲ 12. France
- 1 ▼ 13. Ireland
- 0 14. Italy
- 2 ▼ 15. Switzerland
- 0 16. Brazil
- 1 ▲ 17. Singapore
- 1 ▲ 18. Thailand
- 2 ▼ 19. Malaysia
- 0 20. Belgium
- 3 ▲ 21. Spain
- 1 ▼ 22. Australia
- 1 ▼ 23. Indonesia
- 4 ▲ 24. Colombia
- 1 ▲ 25. Chile

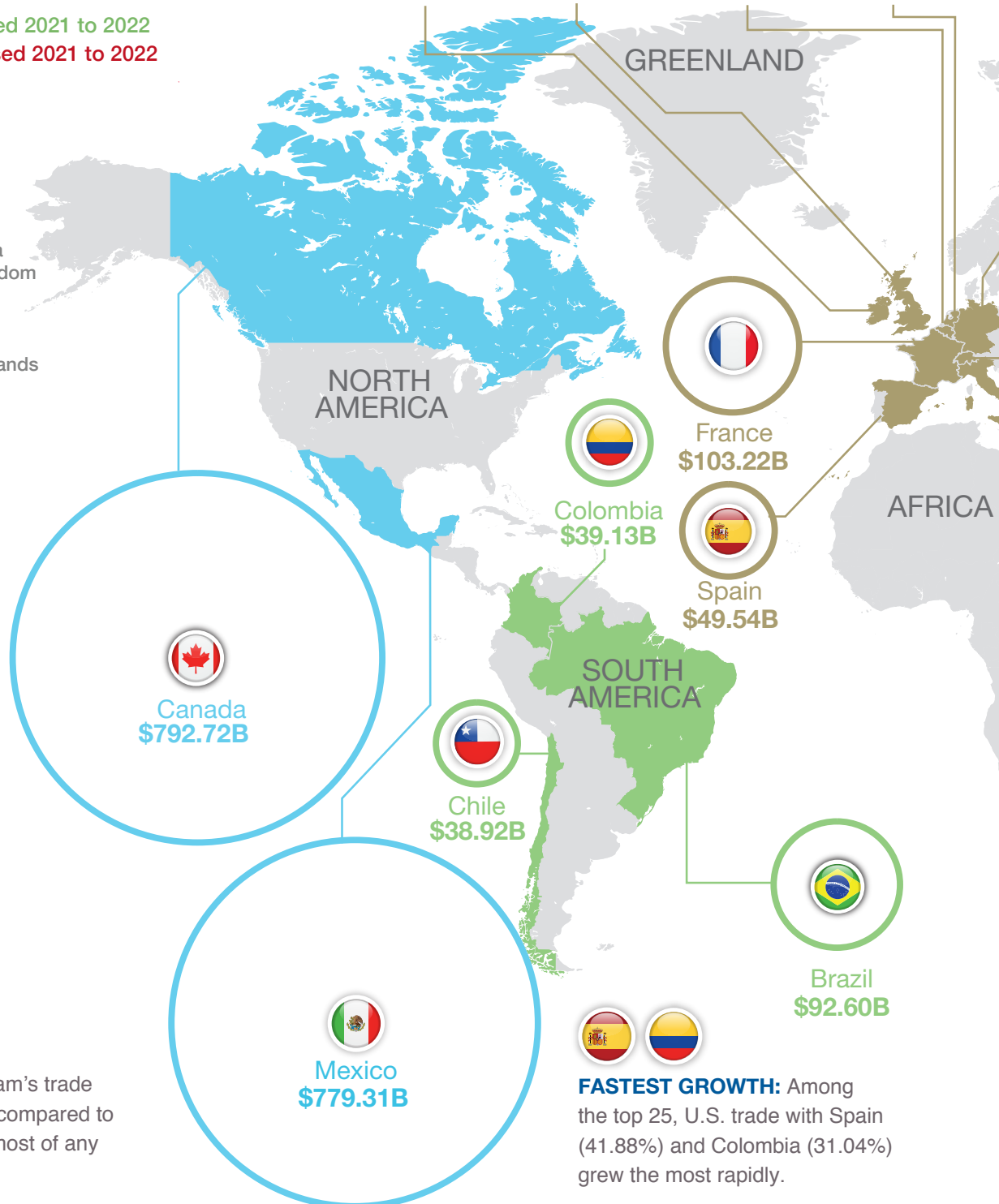
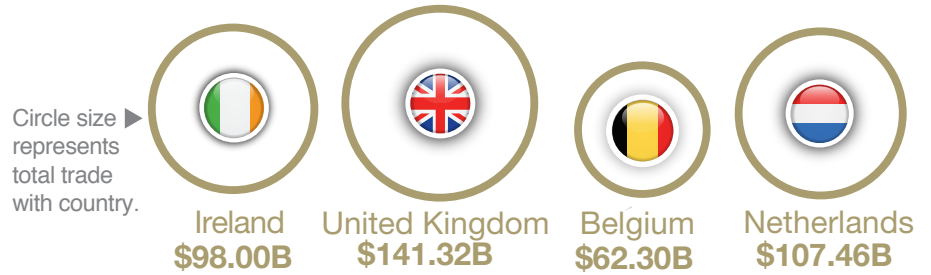


CHART OF TOP 50 TRADE PARTNERS, MORE DETAILS,

PAGE

12



TRADE GAIN: Vietnam's trade has grown 154.38% compared to five years ago. The most of any in the current top 25.



FASTEST GROWTH: Among the top 25, U.S. trade with Spain (41.88%) and Colombia (31.04%) grew the most rapidly.

SUMMARY

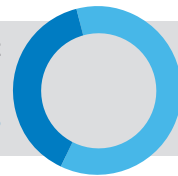
TOTAL TRADE
IN TRILLIONS
\$5.31
15.79% ▲

EXPORTS
IN TRILLIONS
\$2.06
17.59% ▲

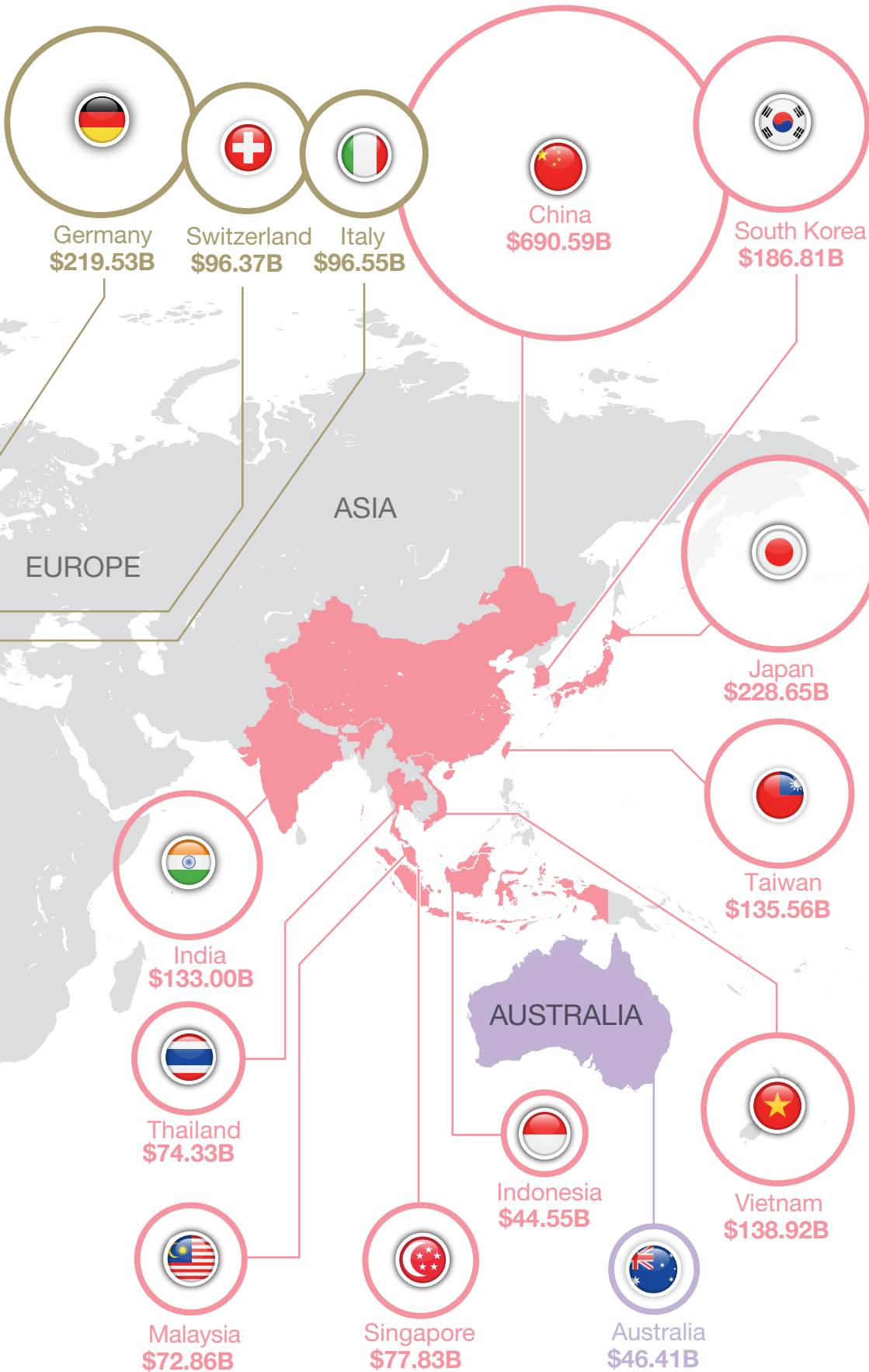
IMPORTS
IN TRILLIONS
\$3.25
14.67% ▲

DEFICIT
IN TRILLIONS
(\$1.18)

TRADE BALANCE
39%
EXPORTS



61%
IMPORTS



TOP 25 EXPORT PARTNERS

84.42% OF ALL U.S. EXPORTS

- 0 01. Canada
- 0 02. Mexico
- 0 03. China
- 0 04. Japan
- 2 ▲ 05. United Kingdom
- 0 06. Germany
- 1 ▲ 07. The Netherlands
- 3 ▼ 08. South Korea
- 0 09. Brazil
- 0 10. India
- 1 ▲ 11. Singapore
- 3 ▲ 12. France
- 2 ▼ 13. Taiwan
- 3 ▲ 14. Switzerland
- 2 ▼ 15. Belgium
- 0 16. Australia
- 1 ▲ 17. Italy
- 4 ▲ 18. Spain
- 5 ▼ 19. Hong Kong
- 1 ▼ 20. Chile
- 1 ▼ 21. United Arab Emirates
- 1 ▼ 22. Colombia
- 0 23. Malaysia
- 0 24. Ireland
- 1 ▲ 25. Thailand

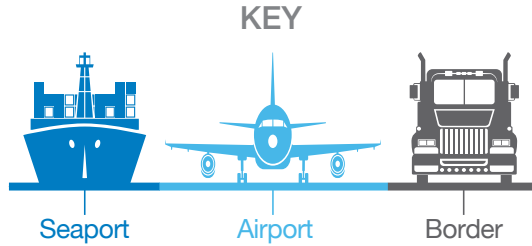
TOP 25 IMPORT PARTNERS

87.59% OF ALL U.S. IMPORTS

- 0 01. China
- 0 02. Mexico
- 0 03. Canada
- 1 ▲ 04. Japan
- 1 ▼ 05. Germany
- 0 06. Vietnam
- 0 07. South Korea
- 0 08. Taiwan
- 1 ▲ 09. India
- 1 ▼ 10. Ireland
- 1 ▲ 11. Italy
- 1 ▲ 12. United Kingdom
- 2 ▼ 13. Switzerland
- 2 ▲ 14. Thailand
- 0 15. France
- 2 ▼ 16. Malaysia
- 1 ▲ 17. Brazil
- 3 ▲ 18. Indonesia
- 2 ▼ 19. The Netherlands
- 0 20. Singapore
- 1 ▲ 21. Belgium
- 9 ▲ 22. Saudi Arabia
- 1 ▲ 23. Spain
- 1 ▼ 24. Israel
- 0 25. Turkey

TOP 20 PORTS

61.98%
OF ALL U.S. TRADE



Circle size represents total trade.



O'Hare Int'l Airport
\$329.92B

KEY

- ▲ Ranking increased 2021 to 2022
- ▼ Ranking decreased 2021 to 2022

Rank change

- 0 01. O'Hare Int'l Airport
- 0 02. Port of Los Angeles
- 0 03. Port Laredo
- 1 ▲ 04. Port of Newark
- 1 ▼ 05. JFK Int'l Airport
- 0 06. Port of Houston
- 1 ▲ 07. Port of New Orleans
- 1 ▼ 08. Detroit Ambassador Bridge
- 0 09. Los Angeles Int'l Airport
- 0 10. Port of Savannah
- 0 11. Port Huron Blue Water Bridge
- 0 12. Port of Long Beach
- 0 13. Port of Virginia
- 0 14. Port of Charleston
- 0 15. Buffalo Peace Bridge
- 9 ▲ 16. Port of Corpus Christi
- 1 ▼ 17. Cleveland Int'l Airport
- 1 ▼ 18. Anchorage Int'l Airport
- 2 ▲ 19. Ysleta-Zaragoza Bridge
- 4 ▲ 20. Port of Baltimore

The top 20 U.S. airports, seaports and border crossings in just four states – Texas, New York, California and Michigan accounted for almost 42 percent of all U.S. trade in 2022.

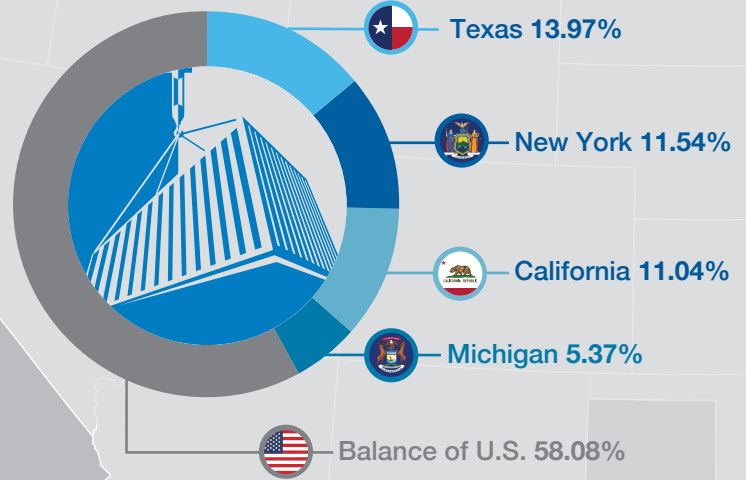
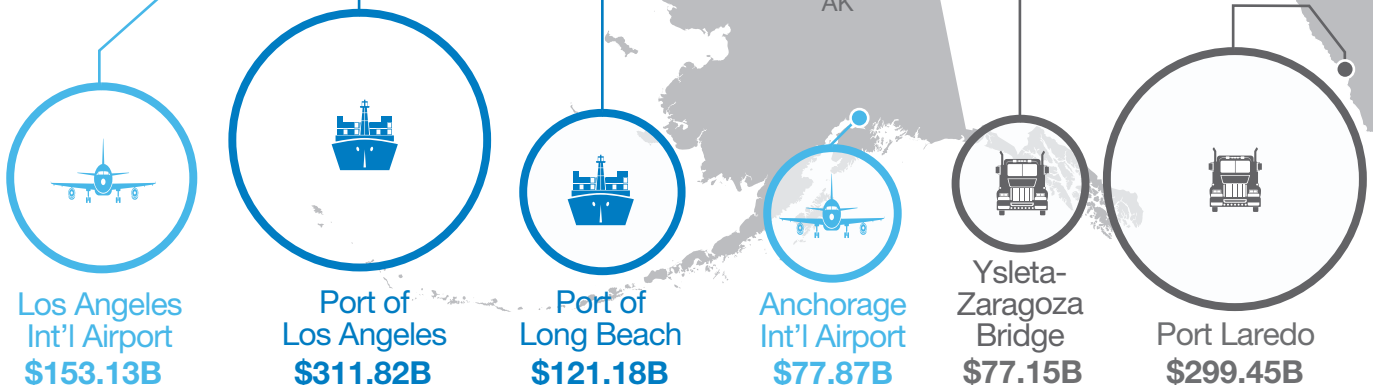


CHART OF TOP 50 PORTS, MORE DETAILS, PAGE 13



SUMMARY

TOTAL TRADE
IN TRILLIONS
\$5.31
15.79% ▲

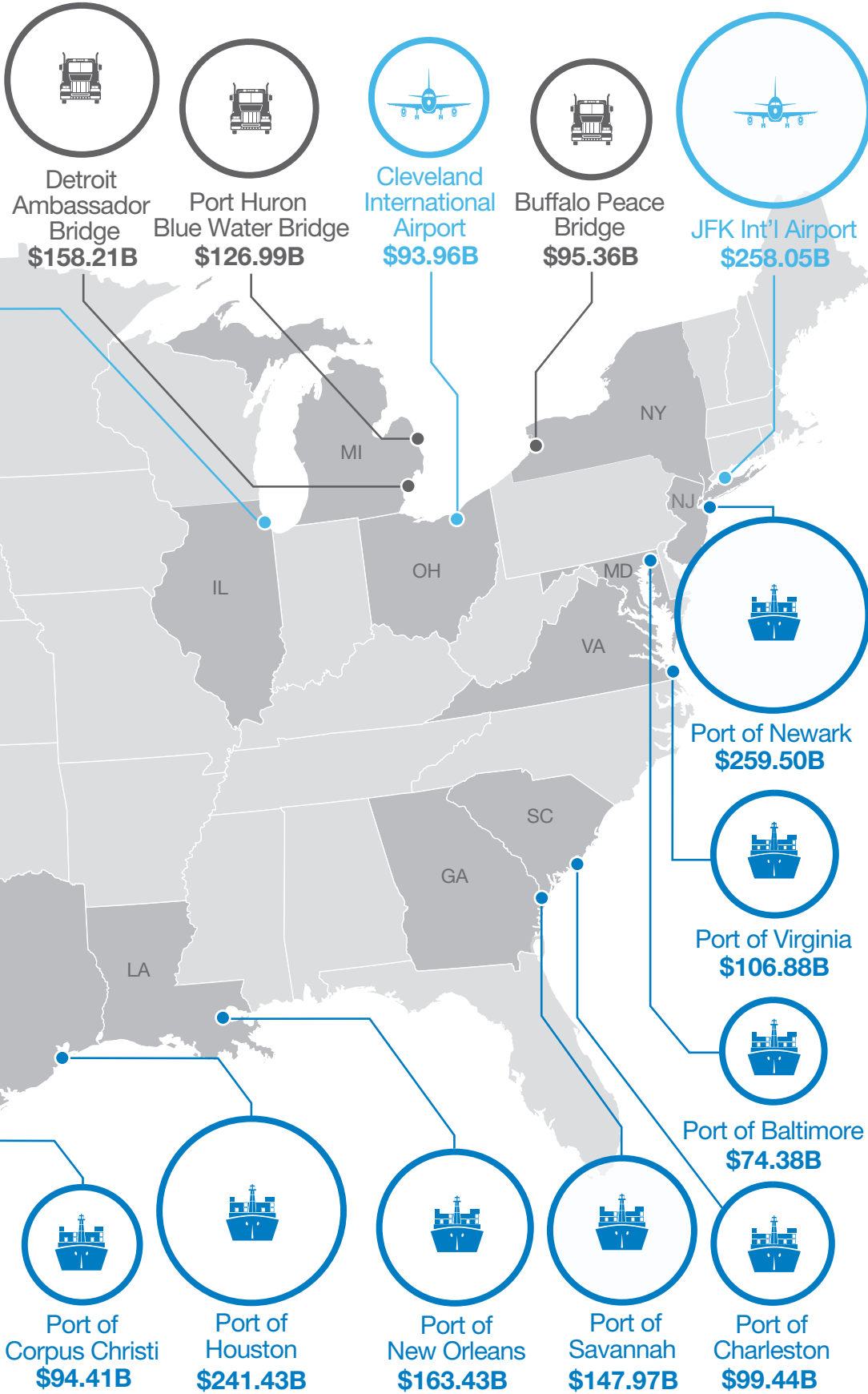
EXPORTS
IN TRILLIONS
\$2.06
17.59% ▲

IMPORTS
IN TRILLIONS
\$3.25
14.67% ▲

DEFICIT
IN TRILLIONS
(\$1.18)

KEY TAKEAWAY

All top 20 ports gained in 2022, outpacing the national average.



TOP 20
PORTS FOR EXPORTS

60.98% OF ALL U.S. EXPORTS

Rank change

- 2 ▲ 01. Port of Houston
- 1 ▼ 02. JFK Int'l Airport
- 1 ▼ 03. Port Laredo
- 0 04. Port of New Orleans
- 4 ▲ 05. Port of Corpus Christi
- 1 ▼ 06. Detroit Ambassador Bridge
- 1 ▼ 07. Low-Value Exports
- 1 ▼ 08. O'Hare Int'l Airport
- 1 ▼ 09. Los Angeles Int'l Airport
- 0 10. Port Huron Blue Water Bridge
- 0 11. Cleveland Int'l Airport
- 0 12. Buffalo Peace Bridge
- 0 13. Miami Int'l Airport
- 0 14. San Francisco Int'l Airport
- 1 ▲ 15. Port of Virginia
- 1 ▲ 16. Port of Savannah
- 2 ▼ 17. Port of New York
- 2 ▲ 18. Port of Long Beach
- 1 ▼ 19. Port of Charleston
- 1 ▼ 20. Port of Los Angeles

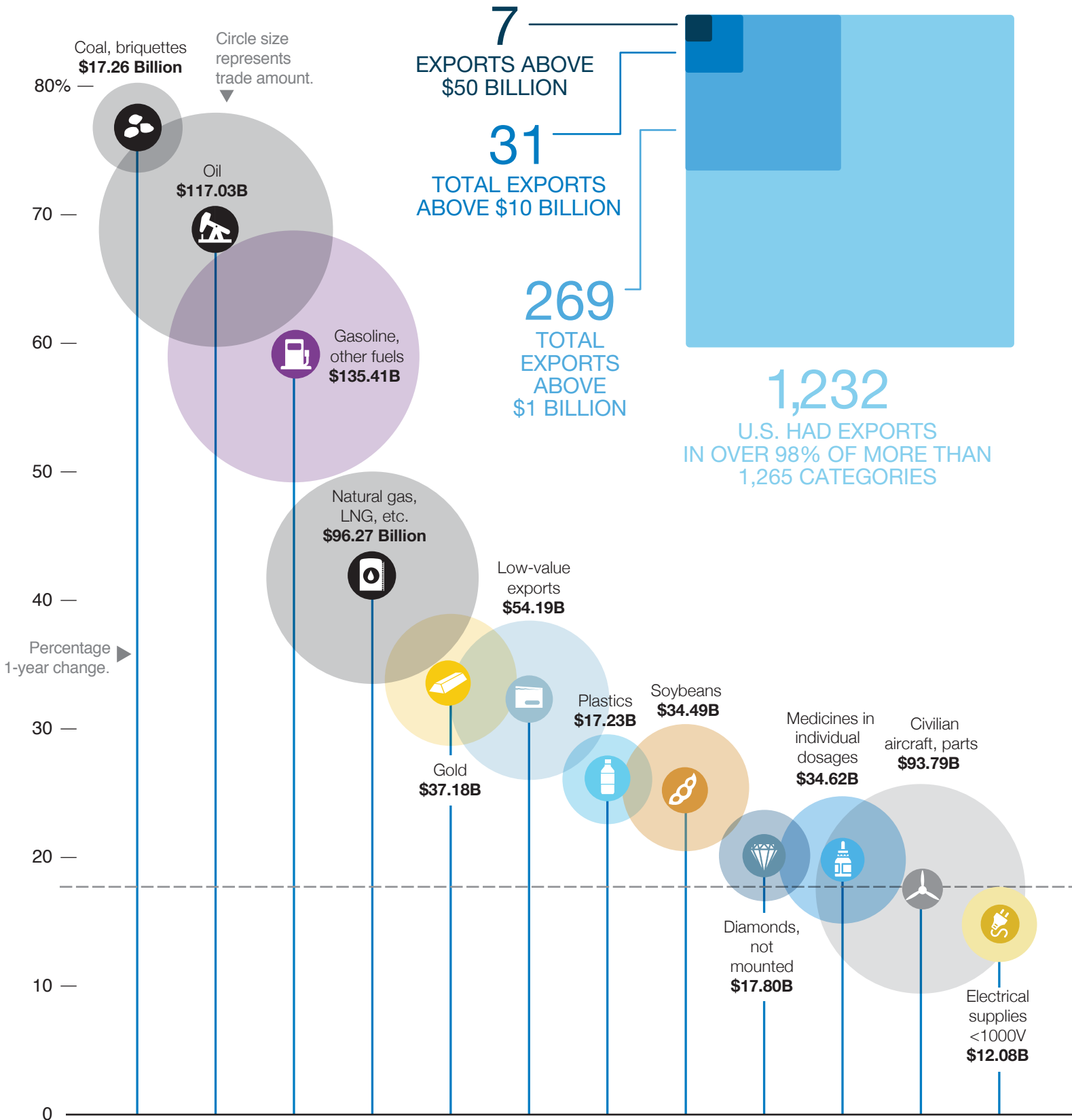
TOP 20
PORTS FOR IMPORTS

66.54% OF ALL U.S. IMPORTS

Rank change

- 0 01. Port of Los Angeles
- 0 02. O'Hare Int'l Airport
- 0 03. Port of Newark
- 0 04. Port Laredo
- 0 05. JFK Int'l Airport
- 0 06. Port of Savannah
- 2 ▲ 07. Port of Houston
- 1 ▼ 08. Los Angeles Int'l Airport
- 1 ▼ 09. Port of Long Beach
- 0 10. Detroit Ambassador Bridge
- 2 ▲ 11. Port of Virginia
- 2 ▲ 12. Port of Charleston
- 1 ▼ 13. Port Huron Blue Water Bridge
- 3 ▼ 14. Port of New Orleans
- 1 ▲ 15. Port of Baltimore
- 1 ▼ 16. Anchorage Int'l Airport
- 0 17. Ysleta-Zaragoza Bridge
- 1 ▲ 18. Buffalo Peace Bridge
- 1 ▲ 19. Cleveland Int'l Airport
- 1 ▲ 20. Otay Mesa Border Crossing

COMMODITIES BROKEN DOWN



7
EXPORTS ABOVE
\$50 BILLION

31
TOTAL EXPORTS
ABOVE \$10 BILLION

269
TOTAL EXPORTS
ABOVE \$1 BILLION

1,232
U.S. HAD EXPORTS
IN OVER 98% OF MORE THAN
1,265 CATEGORIES

PERCENTAGE OF U.S. TRADE
IN 2022 THAT WAS AN EXPORT... **39%**

TOTAL U.S. EXPORTS
\$2.06 TRILLION

1-YEAR CHANGE
17.59%

TOP 25 EXPORTS REPRESENT
51.55% OF ALL EXPORTS

CHART OF TOP 50 U.S. EXPORTS, PAGE 14

2022 UNITED STATES' TOP 25 EXPORTS

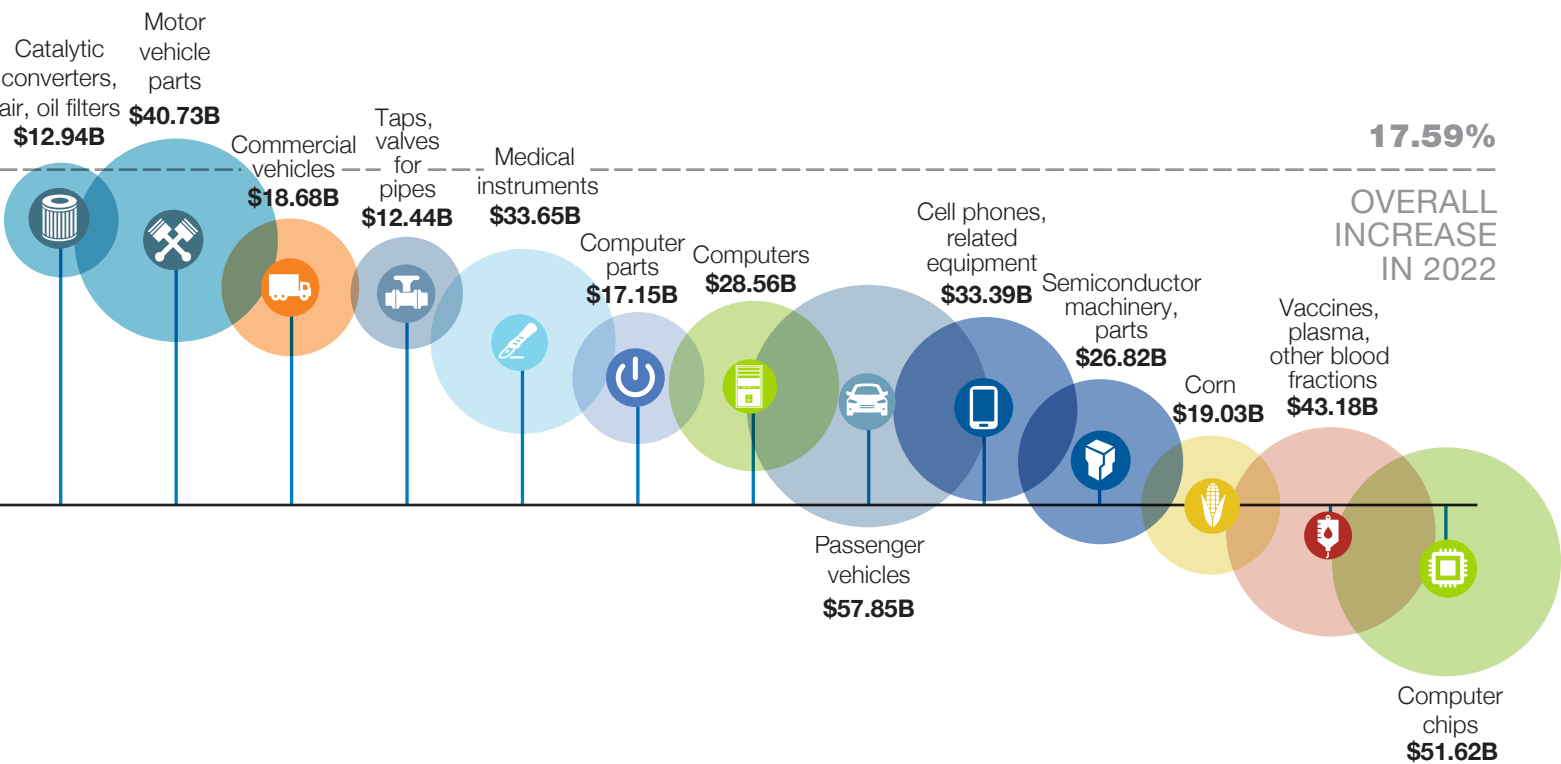
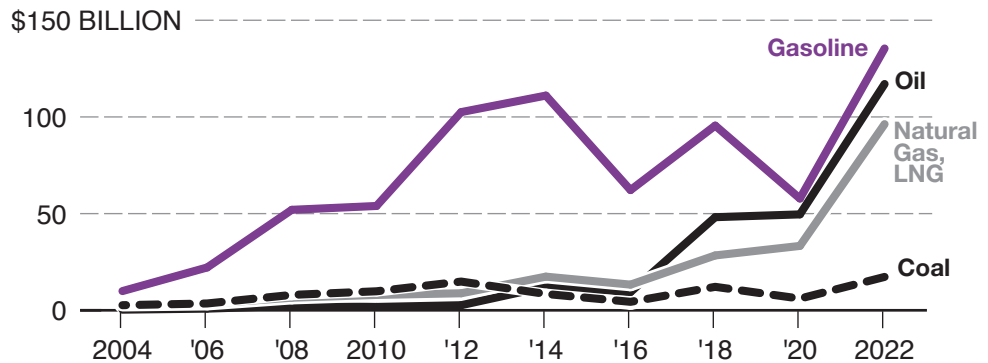
THE PACE OF CHANGE \$2 TRILLION RECORD

It's all about the twos in 2022. A record-setting \$2 trillion in U.S. exports to the world. Two commodities exporting over \$100 billion each: gasoline and oil.

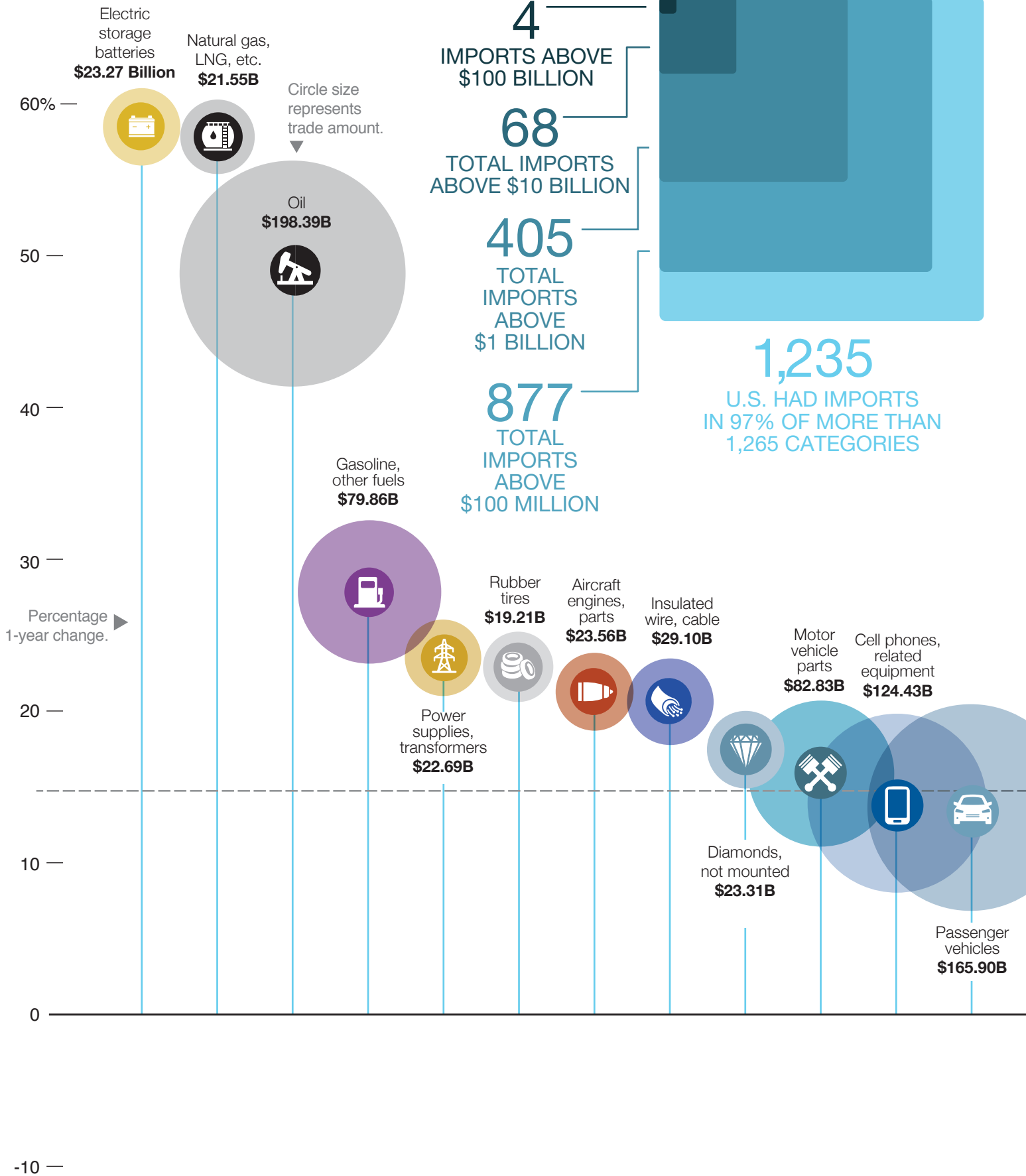


U.S. ENERGY

The category (H.S. Code 27: mineral oils) that includes gasoline, LNG, oil and coal has grown rapidly over the last two decades.



COMMODITIES BROKEN DOWN



TOTAL U.S. IMPORTS
\$3.25 TRILLION

1-YEAR CHANGE
14.67%

TOP 25 IMPORTS REPRESENT
44.73%
 OF ALL IMPORTS

CHART OF TOP 50 U.S. IMPORTS,
 PAGE 15

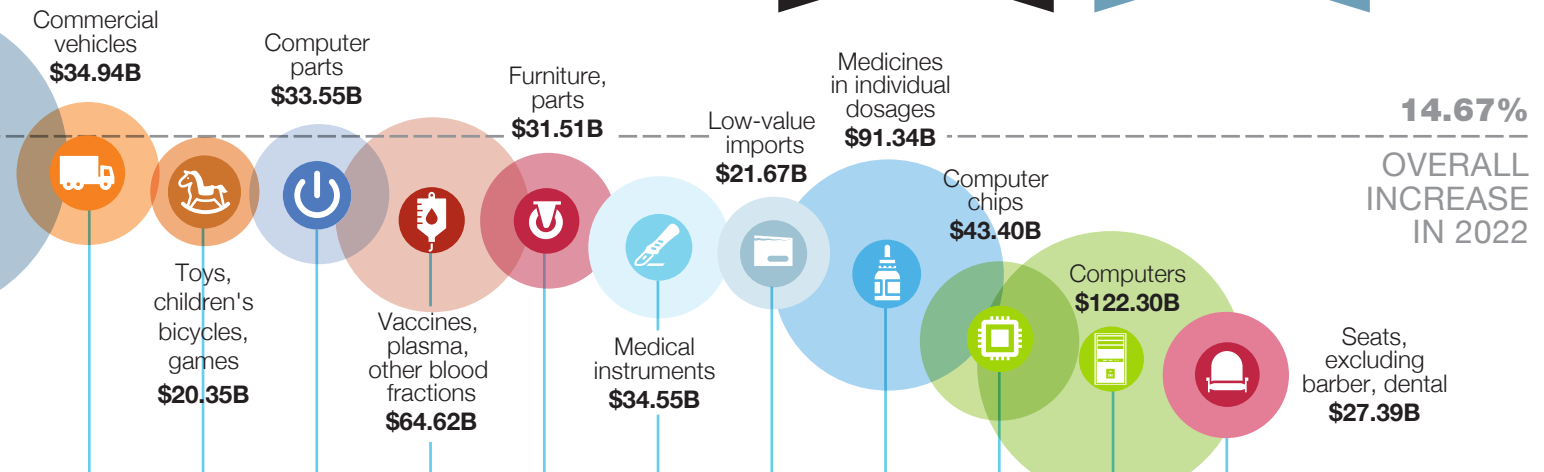
2022 UNITED STATES' TOP 25 IMPORTS

THE PACE OF CHANGE \$3 TRILLION RECORD

Imports surpassed \$3 trillion in value for the first time in history with a gain of 14.67 percent over 2021 figures, and a 38.76 percent gain from five years ago.

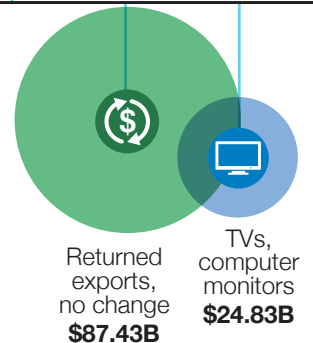
BACKSEAT TO OIL IMPORTS

Passenger vehicles once again took a back seat to oil imports after ranking first for seven consecutive years. These two have ranked either first or second for more than two decades, with the exception of 2016 when cell phones ranked second.



PERCENTAGE OF U.S. TRADE IN 2022 THAT WAS AN IMPORT...

61%



Top 50 U.S. Trade Partners

1-YR CHG	2022 RANK	COUNTRY	TOTAL TRADE 2022	TOTAL TRADE 2021	CHANGE	TOTAL EXPORTS 2022	TOTAL EXPORTS 2021	CHANGE	TOTAL IMPORTS 2022	TOTAL IMPORTS 2021	CHANGE	SURPLUS/(DEFICIT) 2022
		World Total	\$5,309,368,844,393	\$4,585,410,894,287	15.79%	\$2,062,937,255,943	\$1,754,300,367,662	17.59%	\$3,246,431,588,450	\$2,831,110,526,625	14.67%	(\$1,183,494,332,507)
0	1	Canada	\$792,722,458,974	\$665,545,594,562	19.11%	\$354,993,501,398	\$307,758,092,679	15.35%	\$437,728,957,576	\$357,787,501,883	22.34%	(\$82,735,456,178)
0	2	Mexico	\$779,307,814,494	\$661,139,941,543	17.87%	\$324,377,863,297	\$276,491,019,833	17.32%	\$454,929,951,197	\$384,648,921,710	18.27%	(\$130,552,087,900)
0	3	China	\$690,591,182,781	\$656,377,549,345	5.21%	\$153,837,091,085	\$151,442,173,179	1.58%	\$536,754,091,696	\$504,935,376,166	6.30%	(\$382,917,000,611)
0	4	Japan	\$228,647,040,939	\$209,425,036,128	9.18%	\$80,317,145,641	\$74,564,691,664	7.71%	\$148,329,895,298	\$134,860,344,464	9.99%	(\$68,012,749,657)
0	5	Germany	\$219,530,348,994	\$200,548,041,139	9.47%	\$72,922,330,146	\$65,332,518,054	11.62%	\$146,608,018,848	\$135,215,523,085	8.43%	(\$73,685,688,702)
0	6	South Korea	\$186,808,618,411	\$160,861,033,630	16.13%	\$71,470,416,449	\$65,942,400,880	8.38%	\$115,338,201,962	\$94,918,632,750	21.51%	(\$43,867,785,513)
0	7	United Kingdom	\$141,319,413,955	\$117,789,386,744	19.98%	\$77,300,937,906	\$61,425,143,759	25.85%	\$64,018,476,049	\$56,364,242,985	13.58%	\$13,282,461,857
2	8	Vietnam	\$138,919,356,683	\$112,906,386,458	23.04%	\$11,398,113,401	\$11,010,738,443	3.52%	\$127,521,243,282	\$101,895,648,015	25.15%	(\$116,123,129,881)
-1	9	Taiwan	\$135,557,436,367	\$113,902,025,417	19.01%	\$43,712,824,283	\$36,837,942,532	18.66%	\$91,844,612,084	\$77,064,082,885	19.18%	(\$48,131,787,801)
-1	10	India	\$133,002,978,737	\$113,224,767,341	17.47%	\$47,332,209,685	\$40,052,173,293	18.18%	\$85,670,769,052	\$73,172,594,048	17.08%	(\$38,338,559,367)
0	11	The Netherlands	\$107,455,242,857	\$88,185,521,258	21.85%	\$72,889,513,072	\$53,080,077,938	37.32%	\$34,565,729,785	\$35,105,443,320	-1.54%	\$38,323,783,287
3	12	France	\$103,220,955,499	\$79,997,066,116	29.03%	\$45,842,245,433	\$29,893,285,627	53.35%	\$57,378,710,066	\$50,103,780,489	14.52%	(\$11,536,464,633)
-1	13	Ireland	\$98,003,073,769	\$87,481,670,352	12.03%	\$15,968,584,991	\$13,784,559,796	15.84%	\$82,034,488,778	\$73,697,110,556	11.31%	(\$66,065,903,787)
0	14	Italy	\$96,546,699,980	\$82,611,290,152	16.87%	\$27,416,680,573	\$21,660,534,828	26.57%	\$69,130,019,407	\$60,950,755,324	13.42%	(\$41,713,338,834)
-2	15	Switzerland	\$96,367,220,802	\$86,818,836,248	11.00%	\$36,891,771,546	\$23,637,933,457	56.07%	\$59,475,449,256	\$63,180,902,791	-5.86%	(\$22,583,677,710)
0	16	Brazil	\$92,604,600,797	\$78,198,752,231	18.42%	\$53,577,707,161	\$46,934,960,332	14.15%	\$39,026,893,636	\$31,263,791,899	24.83%	\$14,550,813,525
1	17	Singapore	\$77,834,750,875	\$64,790,791,147	20.13%	\$46,186,529,257	\$35,285,465,572	30.89%	\$31,648,221,618	\$29,505,325,575	7.26%	\$14,538,307,639
1	18	Thailand	\$74,328,508,023	\$60,003,029,876	23.87%	\$15,592,629,939	\$12,652,444,705	23.24%	\$58,735,878,084	\$47,350,585,171	24.04%	(\$43,143,248,145)
-2	19	Malaysia	\$72,859,665,327	\$71,291,307,519	2.20%	\$18,107,202,137	\$15,174,239,228	19.33%	\$54,752,463,190	\$56,117,068,291	-2.43%	(\$36,645,261,053)
0	20	Belgium	\$62,301,866,803	\$54,717,019,169	13.86%	\$35,527,708,352	\$33,720,950,680	5.36%	\$26,774,158,451	\$20,996,068,489	27.52%	\$8,753,549,901
3	21	Spain	\$49,543,141,270	\$34,918,379,834	41.88%	\$26,479,750,822	\$16,332,145,229	62.13%	\$23,063,390,448	\$18,586,234,605	24.09%	\$3,416,360,374
-1	22	Australia	\$46,411,341,529	\$38,920,410,750	19.25%	\$30,209,732,553	\$26,453,923,703	14.20%	\$16,201,608,976	\$12,466,487,047	29.96%	\$14,008,123,577
-1	23	Indonesia	\$44,552,774,835	\$36,431,552,085	22.29%	\$9,986,092,498	\$9,378,761,576	6.48%	\$34,566,682,337	\$27,052,790,509	27.77%	(\$24,580,589,839)
4	24	Colombia	\$39,134,569,577	\$29,864,410,874	31.04%	\$20,573,031,967	\$16,686,501,534	23.29%	\$18,561,537,610	\$13,177,909,340	40.85%	\$2,011,494,357
1	25	Chile	\$38,923,145,780	\$32,401,250,090	20.13%	\$23,328,889,251	\$17,338,199,058	34.55%	\$15,594,256,529	\$15,063,051,032	3.53%	\$7,734,632,722
1	26	Israel	\$35,675,320,410	\$31,507,854,041	13.23%	\$14,233,027,401	\$12,861,941,181	10.66%	\$21,442,293,009	\$18,645,912,860	15.00%	(\$7,209,265,608)
3	27	Saudi Arabia	\$35,026,907,103	\$24,846,932,429	40.97%	\$11,565,255,085	\$11,132,972,706	3.88%	\$23,461,652,018	\$13,713,959,723	71.08%	(\$11,896,396,933)
1	28	Turkey	\$33,843,695,172	\$27,775,757,794	21.85%	\$14,993,008,942	\$11,905,337,230	25.94%	\$18,850,686,230	\$15,870,420,564	18.78%	(\$3,857,677,288)
-4	29	Hong Kong	\$30,652,655,758	\$34,010,360,549	-9.87%	\$25,853,086,422	\$29,894,021,653	-13.52%	\$4,799,569,336	\$4,116,338,896	16.60%	\$21,053,517,086
2	30	U. A. E.	\$27,761,735,027	\$23,018,343,373	20.61%	\$20,853,547,904	\$17,064,138,390	22.21%	\$6,908,187,123	\$5,954,204,983	16.02%	\$13,945,360,781
0	31	Philippines	\$25,463,728,982	\$23,296,354,914	9.30%	\$9,290,734,430	\$9,290,213,681	0.01%	\$16,172,994,552	\$14,006,141,233	15.47%	(\$6,882,260,122)
2	32	Sweden	\$24,770,355,425	\$20,093,278,654	23.28%	\$7,667,541,580	\$5,262,677,288	45.70%	\$17,102,813,845	\$14,830,601,366	15.32%	(\$9,435,272,265)
6	33	Poland	\$23,232,233,686	\$15,583,719,462	49.08%	\$11,325,404,011	\$5,843,132,013	93.82%	\$11,906,829,675	\$9,740,587,449	22.24%	(\$581,425,664)
1	34	Austria	\$22,582,142,091	\$19,080,114,258	18.35%	\$4,762,750,185	\$3,935,280,090	21.03%	\$17,819,391,906	\$15,144,834,168	17.66%	(\$13,056,641,721)
1	35	Peru	\$22,354,437,844	\$17,207,825,324	29.91%	\$13,745,701,839	\$10,323,194,684	33.15%	\$8,608,736,005	\$6,884,630,640	25.04%	\$5,136,965,834
-3	36	South Africa	\$21,088,587,342	\$21,205,185,149	-0.55%	\$6,514,940,332	\$5,479,213,790	18.90%	\$14,573,647,010	\$15,725,971,359	-7.33%	(\$8,058,706,678)
0	37	Dominican Rep.	\$20,769,456,074	\$17,004,270,474	22.14%	\$13,853,349,255	\$10,673,209,057	29.80%	\$6,916,106,819	\$6,331,061,417	9.24%	\$6,937,242,436
4	38	Argentina	\$19,787,943,789	\$12,884,970,282	53.57%	\$12,850,390,086	\$7,762,216,163	65.55%	\$6,937,553,703	\$5,122,754,119	35.43%	\$5,912,836,383
2	39	Ecuador	\$18,305,808,849	\$13,168,779,701	39.01%	\$7,901,986,802	\$5,009,317,197	57.75%	\$10,403,822,047	\$8,159,462,504	27.51%	(\$2,501,835,245)
-2	40	Denmark	\$17,485,094,014	\$15,652,268,331	11.71%	\$4,501,750,314	\$3,543,819,857	27.03%	\$12,983,343,700	\$12,108,448,474	7.23%	(\$8,481,593,386)
-1	41	Costa Rica	\$17,275,957,151	\$13,881,295,181	24.45%	\$8,525,372,198	\$7,344,936,902	16.07%	\$8,750,584,953	\$6,536,358,279	33.88%	(\$225,212,755)
-19	42	Russia	\$16,172,886,649	\$36,021,740,915	-55.10%	\$1,715,079,989	\$6,387,057,963	-73.15%	\$14,457,806,660	\$29,634,682,952	-51.21%	(\$12,742,726,671)
0	43	Guatemala	\$15,550,173,613	\$12,737,387,293	22.08%	\$10,236,696,154	\$8,070,172,153	26.85%	\$5,313,477,459	\$4,667,215,140	13.85%	\$4,923,218,695
0	44	Honduras	\$14,206,402,962	\$11,606,507,045	22.40%	\$8,133,436,000	\$6,392,900,571	27.23%	\$6,072,966,962	\$5,213,606,474	16.48%	\$2,060,469,038
1	45	Bangladesh	\$13,984,195,817	\$10,649,968,150	31.31%	\$2,813,866,728	\$2,350,514,738	19.71%	\$11,170,329,089	\$8,299,453,412	34.59%	(\$8,356,462,361)
3	46	Cambodia	\$12,678,672,660	\$9,157,510,417	38.45%	\$449,190,823	\$415,555,294	8.09%	\$12,229,481,837	\$8,741,955,123	39.89%	(\$11,780,291,014)
5	47	Panama	\$12,555,137,069	\$8,888,870,715	41.25%	\$12,032,280,359	\$8,133,223,450	47.94%	\$522,856,710	\$755,647,265	-30.81%	\$11,509,423,649
-3	48	Norway	\$11,377,669,643	\$10,688,362,291	6.45%	\$4,712,660,937	\$3,956,305,162	19.12%	\$6,665,008,706	\$6,732,057,129	-1.00%	(\$1,952,347,769)
5	49	Finland	\$11,358,949,206	\$8,501,759,541	33.61%	\$2,650,793,907	\$1,727,344,206	53.46%	\$8,708,155,299	\$6,774,415,335	28.54%	(\$6,057,361,392)
-3	50	Czech Republic	\$11,336,241,603	\$10,027,209,160	13.05%	\$3,798,820,768	\$3,660,959,984	3.77%	\$7,537,420,835	\$6,366,249,176	18.40%	(\$3,738,600,067)

Source: WorldCity analysis of U.S. Census Bureau data

Top 50 U.S. Ports

1-YR CHNG RANK	2022 PORT	TOTAL TRADE 2022	TOTAL TRADE 2021	CHANGE	TOTAL EXPORTS 2022	TOTAL EXPORTS 2021	CHANGE	TOTAL IMPORTS 2022	TOTAL IMPORTS 2021	CHANGE	SURPLUS/ (DEFICIT) 2022
	World Total	\$5,309,368,844,393	\$4,585,410,894,287	15.79%	\$2,062,937,255,943	\$1,754,300,367,662	17.59%	\$3,246,431,588,450	\$2,831,110,526,625	14.67%	(\$1,183,494,332,507)
0	1 Chicago O'Hare International Airport	\$329,922,418,426	\$304,773,614,854	8.25%	\$69,881,171,363	\$64,556,679,366	8.25%	\$260,041,247,063	\$240,216,935,488	8.25%	(\$190,160,075,700)
0	2 Port of Los Angeles	\$311,819,063,221	\$296,099,339,484	5.31%	\$28,461,587,314	\$26,881,987,666	5.88%	\$283,357,475,907	\$269,217,351,818	5.25%	(\$254,895,888,593)
0	3 Port Laredo	\$299,446,457,854	\$248,341,176,009	20.58%	\$115,937,068,324	\$99,047,910,183	17.05%	\$183,509,389,530	\$149,293,265,826	22.92%	(\$67,572,321,206)
1	4 Port of Newark	\$259,502,380,488	\$228,169,286,113	13.73%	\$19,841,925,818	\$19,388,637,282	2.34%	\$239,660,454,670	\$208,780,648,831	14.79%	(\$219,818,528,852)
-1	5 John F. Kennedy International Airport	\$258,048,582,690	\$236,359,150,475	9.18%	\$118,886,408,185	\$105,083,366,805	13.14%	\$139,162,174,505	\$131,275,783,670	6.01%	(\$20,275,766,320)
0	6 Port of Houston	\$241,425,583,070	\$170,887,766,170	41.28%	\$131,659,259,034	\$95,073,964,512	38.48%	\$109,766,324,036	\$75,813,801,658	44.78%	\$21,892,934,998
1	7 Port of New Orleans	\$163,431,296,950	\$140,958,681,958	15.94%	\$95,102,389,556	\$80,259,365,419	18.49%	\$68,328,907,394	\$60,699,316,539	12.57%	\$26,773,482,162
-1	8 Detroit Ambassador Bridge, MI	\$158,214,935,732	\$144,292,935,125	9.65%	\$83,515,691,315	\$76,717,187,331	8.86%	\$74,699,244,417	\$67,575,747,794	10.54%	\$8,816,446,898
0	9 Los Angeles International Airport	\$153,126,582,683	\$139,189,704,237	10.01%	\$61,459,149,235	\$56,820,141,607	8.16%	\$91,667,433,448	\$82,369,562,630	11.29%	(\$30,208,284,213)
0	10 Port of Savannah, GA	\$147,970,241,082	\$127,580,793,071	15.98%	\$34,395,908,556	\$30,164,909,439	14.03%	\$113,574,332,526	\$97,415,883,632	16.59%	(\$79,178,423,970)
0	11 Port Huron Blue Water Bridge, MI	\$126,987,572,284	\$109,419,989,966	16.06%	\$57,105,631,712	\$49,169,415,455	16.14%	\$69,881,940,572	\$60,250,574,511	15.99%	(\$12,776,308,860)
0	12 Port of Long Beach	\$121,184,052,067	\$103,692,330,212	16.87%	\$29,612,934,731	\$26,819,420,865	10.42%	\$91,571,117,336	\$76,872,909,347	19.12%	(\$61,958,182,605)
0	13 Port of Virginia	\$106,880,953,085	\$90,768,726,127	17.75%	\$35,602,136,079	\$30,601,520,376	16.34%	\$71,278,817,006	\$60,167,205,751	18.47%	(\$35,676,680,927)
0	14 Port of Charleston	\$99,444,487,215	\$89,963,945,718	10.54%	\$28,539,168,374	\$29,826,309,792	-4.32%	\$70,905,318,841	\$60,137,635,926	17.91%	(\$42,366,150,467)
0	15 Buffalo Peace Bridge, NY	\$95,359,297,388	\$83,509,478,183	14.19%	\$47,220,422,882	\$42,563,483,030	10.94%	\$48,138,874,506	\$40,945,995,153	17.57%	(\$918,451,624)
9	16 Port of Corpus Christi, TX	\$94,406,567,157	\$56,717,965,120	66.45%	\$86,295,234,222	\$51,471,448,990	67.66%	\$8,111,332,935	\$5,246,516,130	54.60%	\$78,183,901,287
-1	17 Cleveland's Hopkins International Airport, OH	\$93,957,338,181	\$81,952,505,959	14.65%	\$49,713,491,703	\$43,641,098,223	13.91%	\$44,243,846,478	\$38,311,407,736	15.48%	\$5,469,645,225
-1	18 Anchorage International Airport, AK	\$77,868,508,935	\$72,081,633,094	8.03%	\$25,310,496,567	\$25,064,586,564	0.98%	\$52,558,012,368	\$47,017,046,530	11.79%	(\$27,247,515,801)
2	19 Ysleta-Zaragoza Bridge, TX	\$77,149,814,394	\$64,461,075,264	19.68%	\$25,415,098,627	\$21,086,122,025	20.53%	\$51,734,715,767	\$43,374,953,239	19.27%	(\$26,319,617,140)
4	20 Port of Baltimore, MD	\$74,377,674,880	\$61,375,210,161	21.19%	\$19,131,486,064	\$17,040,120,979	12.27%	\$55,246,188,816	\$44,335,089,182	24.61%	(\$36,114,702,752)
-2	21 Miami Int'l Airport	\$73,854,712,317	\$69,264,836,837	6.63%	\$44,192,744,824	\$39,666,617,199	11.41%	\$29,661,967,493	\$29,598,219,638	0.22%	\$14,530,777,331
-2	22 Low-value exports	\$72,375,412,573	\$65,506,611,434	10.49%	\$72,375,412,573	\$65,506,611,434	10.49%	\$0	\$0	NA	\$72,375,412,573
-5	23 San Francisco International Airport, CA	\$72,194,817,944	\$70,533,657,793	2.36%	\$35,635,263,441	\$38,402,842,341	-7.21%	\$36,559,554,503	\$32,130,815,452	13.78%	(\$924,291,062)
-1	24 Dallas-Fort Worth International Airport, TX	\$66,213,142,464	\$61,378,823,383	7.88%	\$28,418,926,307	\$25,872,301,983	9.84%	\$37,794,216,157	\$35,506,521,400	6.44%	(\$9,375,289,850)
1	25 Otay Mesa Freeway Border Crossing, CA	\$62,491,819,133	\$55,395,917,505	12.81%	\$21,748,542,159	\$18,725,474,140	16.14%	\$40,743,276,974	\$36,670,443,365	11.11%	(\$18,994,734,815)
-4	26 Hartsfield-Jackson Atlanta International Airport	\$59,096,460,948	\$63,692,407,836	-7.22%	\$21,171,292,073	\$21,625,497,217	-2.10%	\$37,925,168,875	\$42,066,910,619	-9.85%	(\$16,753,876,802)
0	27 Port of Oakland, CA	\$52,317,462,166	\$50,045,744,407	4.54%	\$20,185,915,235	\$20,763,575,122	-2.78%	\$32,131,546,931	\$29,282,169,285	9.73%	(\$11,945,631,696)
0	28 Port of New York	\$50,264,899,619	\$44,919,898,827	11.90%	\$32,304,323,372	\$31,063,780,024	3.99%	\$17,960,576,247	\$13,856,118,803	29.62%	\$14,343,747,125
1	29 Pharr International Bridge, TX	\$46,436,697,354	\$41,682,730,519	11.41%	\$18,739,006,706	\$16,437,155,630	14.00%	\$27,697,690,648	\$25,245,574,889	9.71%	(\$8,958,683,942)
-1	30 Port of Tacoma, WA	\$41,867,857,633	\$44,418,396,530	-5.74%	\$8,355,007,833	\$7,871,270,098	6.15%	\$33,512,849,800	\$36,547,126,432	-8.30%	(\$25,157,841,967)
0	31 Port of Philadelphia	\$41,553,411,661	\$34,085,912,271	21.91%	\$7,747,787,160	\$5,433,087,422	42.60%	\$33,805,624,501	\$28,652,824,849	17.98%	(\$26,057,837,341)
2	32 Pembina Border Crossing, ND	\$37,740,529,002	\$30,053,725,582	25.58%	\$21,375,200,385	\$16,008,873,980	33.52%	\$16,365,328,617	\$14,044,851,602	16.52%	\$5,009,871,768
12	33 Port of Port Arthur, TX	\$35,817,360,931	\$22,020,810,955	62.65%	\$19,496,787,880	\$11,226,140,732	73.67%	\$16,320,573,051	\$10,794,670,223	51.19%	\$3,176,214,829
-2	34 Eagle Pass	\$34,018,146,549	\$33,826,926,148	0.57%	\$10,874,698,203	\$10,486,663,750	3.70%	\$23,143,448,346	\$23,340,262,398	-0.84%	(\$12,268,750,143)
0	35 Blaine / Surrey Border Crossing, WA	\$33,848,098,863	\$30,043,391,369	12.66%	\$16,192,482,817	\$14,253,850,005	13.60%	\$17,655,616,046	\$15,789,541,364	11.82%	(\$1,463,133,229)
0	36 Rouses Point / Lacolle Border Crossing, NY	\$32,970,970,100	\$29,516,496,369	11.70%	\$12,134,944,487	\$10,138,883,192	19.69%	\$20,836,025,613	\$19,377,613,177	7.53%	(\$8,701,081,126)
0	37 Port Miami	\$32,925,675,398	\$28,628,536,396	15.01%	\$11,856,487,867	\$10,220,029,988	16.01%	\$21,069,187,531	\$18,408,506,408	14.45%	(\$9,212,699,664)
1	38 Seattle-Tacoma International Airport	\$31,736,105,584	\$26,540,351,566	19.58%	\$22,960,381,310	\$18,598,034,710	23.46%	\$8,775,724,274	\$7,942,316,856	10.49%	\$14,184,657,036
-1	39 Santa Teresa Border Crossing, NM	\$31,536,040,462	\$27,372,054,395	15.21%	\$11,996,086,685	\$11,567,140,735	3.71%	\$19,539,953,777	\$15,804,913,660	23.63%	(\$7,543,867,092)
0	40 Nogales Border Crossing, AZ	\$29,168,883,439	\$25,103,007,713	16.20%	\$10,264,924,608	\$9,883,377,143	3.86%	\$18,903,958,831	\$15,219,630,570	24.21%	(\$8,639,034,223)
-8	41 Port of Seattle, WA	\$29,161,239,555	\$31,516,247,640	-7.47%	\$7,094,494,698	\$8,931,616,095	-20.57%	\$22,066,744,857	\$22,584,631,545	-2.29%	(\$14,972,250,159)
0	42 Port Everglades, FL	\$28,622,101,836	\$24,167,302,247	18.43%	\$14,290,532,926	\$11,783,301,926	21.28%	\$14,331,568,910	\$12,384,000,321	15.73%	(\$41,035,984)
6	43 Port of Peoria, IL	\$27,982,815,985	\$16,907,508,189	65.51%	\$1,174,970	\$1,355,346	-13.31%	\$27,981,641,015	\$16,906,152,843	65.51%	(\$27,980,466,045)
2	44 Port of Mobile, AL	\$27,699,293,862	\$21,327,046,436	29.88%	\$6,476,978,672	\$5,024,749,086	28.90%	\$21,222,315,190	\$16,302,297,350	30.18%	(\$14,745,336,518)
-2	45 Port of Jacksonville, FL	\$26,940,709,222	\$23,441,614,418	14.93%	\$7,557,304,455	\$6,345,789,698	19.09%	\$19,383,404,767	\$17,095,824,720	13.38%	(\$11,826,100,312)
4	46 Port of Lake Charles, LA	\$26,644,493,898	\$11,312,372,320	135.53%	\$25,581,421,801	\$9,881,492,819	158.88%	\$1,063,072,097	\$1,430,879,501	-25.70%	\$24,518,349,704
-6	47 El Paso Border Crossing, TX	\$26,491,958,281	\$24,454,633,308	8.33%	\$17,981,639,862	\$15,751,850,055	14.16%	\$8,510,318,419	\$8,702,783,253	-2.21%	\$9,471,321,443
-4	48 Port of Brunswick, GA	\$26,035,772,359	\$22,665,966,602	14.87%	\$9,398,712,724	\$9,101,183,024	3.27%	\$16,637,059,635	\$13,564,783,578	22.65%	(\$7,238,346,911)
-1	49 Port of Beaumont, TX	\$25,541,921,085	\$17,338,787,298	47.31%	\$23,641,487,603	\$16,269,497,237	45.31%	\$1,900,433,482	\$1,069,290,061	77.73%	\$21,741,054,121
-3	50 Port of Southern Louisiana, Gramercy, St. James Parish	\$25,467,987,554	\$18,638,879,252	36.64%	\$20,635,500,510	\$14,096,298,803	46.39%	\$4,832,487,044	\$4,542,580,449	6.38%	\$15,803,013,466

Source: WorldCity analysis of U.S. Census Bureau data

Top 50 Export Commodities

1-YEAR CHANGE	2022 RANK		2022	2021	ONE-YEAR CHANGE
		Total, All Exports	\$2,062,937,255,943	\$1,754,300,367,662	17.59%
0	1	Gasoline, other fuels	\$135,405,081,430	\$85,142,497,587	59.03%
1	2	Oil	\$117,034,462,388	\$69,307,283,557	68.86%
1	3	Natural gases, LNG, etc.	\$96,272,764,568	\$67,922,038,423	41.74%
-2	4	Civilian aircraft, parts	\$93,789,378,952	\$79,894,381,324	17.39%
0	5	Passenger vehicles	\$57,850,860,661	\$54,939,181,845	5.30%
2	6	Low-value exports	\$54,188,106,978	\$40,997,215,262	32.18%
-1	7	Computer chips	\$51,623,041,691	\$53,034,863,701	-2.66%
-1	8	Vaccines, plasma, other blood fractions	\$43,182,191,316	\$43,857,123,171	-1.54%
0	9	Motor vehicle parts	\$40,734,687,284	\$35,730,866,448	14.00%
3	10	Gold	\$37,175,292,755	\$27,799,376,769	33.73%
1	11	Medicines in individual dosages	\$34,618,611,127	\$28,914,793,774	19.73%
2	12	Soybeans	\$34,489,756,248	\$27,484,024,331	25.49%
-2	13	Medical instruments	\$33,651,503,924	\$30,970,463,265	8.66%
-4	14	Cell phones, related equipment	\$33,387,953,139	\$31,778,928,941	5.06%
0	15	Computers	\$28,562,163,912	\$26,918,481,159	6.11%
0	16	Semiconductor machinery, parts	\$26,821,527,900	\$26,262,671,000	2.13%
0	17	Corn	\$19,031,647,254	\$19,020,593,538	0.06%
0	18	Commercial vehicles	\$18,675,641,143	\$16,769,361,284	11.37%
1	19	Diamonds, not mounted	\$17,799,923,527	\$14,795,666,228	20.30%
11	20	Coal, briquettes	\$17,263,147,852	\$9,751,628,946	77.03%
0	21	Plastics	\$17,231,844,243	\$13,667,748,936	26.08%
-3	22	Computer parts	\$17,152,290,308	\$16,092,706,382	6.58%
0	23	Catalytic converters, air, oil filters	\$12,942,693,843	\$11,277,346,474	14.77%
0	24	Taps, valves for pipes	\$12,435,460,569	\$11,205,639,379	10.98%
3	25	Electrical supplies <1000V	\$12,081,295,119	\$10,523,500,618	14.80%
4	26	Insulated wire, cable	\$12,000,468,663	\$9,996,372,255	20.05%
0	27	Artificial knees, hips, etc.	\$11,584,390,447	\$10,912,234,622	6.16%
-2	28	Misc. medical chemical re-agents	\$11,416,012,365	\$10,963,513,404	4.13%
0	29	Medical equipment for physicals	\$10,727,942,610	\$10,316,275,509	3.99%
2	30	Aircraft engines, parts	\$10,266,041,014	\$9,047,032,769	13.47%
-9	31	Unwrought platinum in various forms	\$10,032,241,087	\$13,180,205,810	-23.88%
9	32	Jewelry, parts	\$9,673,650,423	\$7,251,926,918	33.39%
22	33	Cotton	\$9,040,043,063	\$5,685,185,756	59.01%
-9	34	Scrap of precious metal	\$9,026,866,099	\$11,082,765,387	-18.55%
0	35	Misc. plastic articles	\$8,624,388,316	\$7,822,116,338	10.26%
-2	36	Pumps for dispensing liquids	\$8,557,573,456	\$7,843,841,346	9.10%
3	37	Wheat	\$8,523,270,094	\$7,263,472,616	17.34%
26	38	Petroleum products	\$8,414,908,174	\$5,058,775,296	66.34%
0	39	Digital storage devices	\$8,250,742,791	\$7,366,620,552	12.00%
5	40	Paintings, drawings and other artwork	\$8,194,412,169	\$6,343,127,753	29.19%
-4	41	Solar panels, etc.	\$8,153,314,567	\$7,487,998,257	8.89%
-9	42	Almonds, walnuts, pistachios, etc.	\$8,114,849,412	\$8,124,694,787	-0.12%
-5	43	Diesel engines	\$7,971,281,294	\$7,481,404,050	6.55%
0	44	Transmission shafts, bearings, gears	\$7,555,639,957	\$6,412,015,667	17.84%
-9	45	Scrap iron, steel	\$7,537,417,139	\$7,629,981,603	-1.21%
-3	46	Miscellaneous machines, parts	\$7,502,799,914	\$6,725,385,707	11.56%
10	47	Acyclic hydrocarbons	\$7,462,869,019	\$5,558,640,263	34.26%
-1	48	Power supplies, transformers	\$7,180,958,504	\$6,186,915,647	16.07%
0	49	Parts for heavy machinery	\$6,933,816,338	\$6,061,381,716	14.39%
-2	50	Compressors and pumps	\$6,902,647,271	\$6,136,835,969	12.48%

Source: WorldCity analysis of U.S. Census Bureau data

Top 50 Import Commodities

1-YEAR CHANGE	2022 RANK		2022	2021	ONE-YEAR CHANGE
		Total, All Imports	\$3,246,431,588,450	\$2,831,110,526,625	14.67%
1	1	Oil	\$198,385,384,839	\$133,140,767,172	49.00%
-1	2	Passenger vehicles	\$165,902,927,352	\$145,938,152,387	13.68%
1	3	Cell phones, related equipment	\$124,431,451,704	\$109,452,017,877	13.69%
-1	4	Computers	\$122,301,250,367	\$116,488,267,981	4.99%
1	5	Medicines in individual dosages	\$91,341,503,025	\$83,913,466,382	8.85%
-1	6	Returned exports, without change	\$87,433,495,647	\$92,535,655,178	-5.51%
0	7	Motor vehicle parts	\$82,829,749,898	\$71,395,260,255	16.02%
0	8	Gasoline, other fuels	\$79,863,806,514	\$62,490,715,401	27.80%
0	9	Vaccines, plasma, other blood fractions	\$64,624,889,108	\$58,071,000,535	11.29%
0	10	Computer chips	\$43,401,214,036	\$41,014,379,463	5.82%
1	11	Commercial vehicles	\$34,936,715,059	\$30,889,068,032	13.10%
-1	12	Medical instruments	\$34,550,248,306	\$31,388,857,839	10.07%
0	13	Computer parts	\$33,548,720,224	\$29,920,287,252	12.13%
0	14	Furniture, parts	\$31,513,554,223	\$28,389,833,523	11.00%
2	15	Insulated wire, cable	\$29,099,450,857	\$24,136,610,904	20.56%
0	16	Seats, excluding barber, dental	\$27,392,779,787	\$26,273,089,992	4.26%
-2	17	TVs, computer monitors	\$24,830,033,407	\$26,627,955,728	-6.75%
2	18	Aircraft engines, parts	\$23,556,543,509	\$19,413,283,142	21.34%
-1	19	Diamonds, not mounted	\$23,314,693,938	\$19,876,896,050	17.30%
10	20	Electric storage batteries	\$23,270,261,024	\$14,669,258,353	58.63%
0	21	Power supplies, transformers	\$22,691,273,493	\$18,352,703,768	23.64%
-3	22	Low-value imports	\$21,669,602,602	\$19,758,015,422	9.67%
13	23	Natural gas, LNG, etc.	\$21,550,724,983	\$13,641,504,975	57.98%
-1	24	Toys, children's bicycles, games	\$20,347,376,797	\$18,116,776,544	12.31%
1	25	Rubber tires	\$19,214,915,863	\$15,636,974,076	22.88%
13	26	Tractors	\$18,515,942,706	\$12,953,217,217	42.94%
-3	27	Digital storage devices	\$18,416,680,236	\$16,954,988,015	8.62%
-1	28	Taps, valves for pipes	\$17,472,879,772	\$15,101,013,147	15.71%
0	29	Sweaters, pullovers, vests, knit or crocheted	\$17,186,928,080	\$14,716,607,486	16.79%
10	30	Solar panels, etc.	\$17,172,864,708	\$12,951,052,371	32.60%
33	31	Articles with precious metals	\$16,783,064,326	\$9,778,741,185	71.63%
-1	32	Artificial knees, hips, etc.	\$16,695,639,002	\$14,262,622,519	17.06%
19	33	Miscellaneous electrical machinery	\$16,693,668,244	\$11,226,319,752	48.70%
0	34	Electrical boards, panels and switches	\$16,039,877,894	\$13,873,107,191	15.62%
-7	35	Printers, all types, parts	\$15,661,980,318	\$14,938,457,905	4.84%
14	36	Aluminum, unwrought	\$14,956,767,135	\$11,362,908,258	31.63%
7	37	Heterocyclic chemical compounds	\$14,937,119,035	\$12,136,904,255	23.07%
0	38	Compressors and pumps	\$14,905,746,838	\$13,106,291,596	13.73%
-14	39	Misc. plastic articles	\$14,713,005,617	\$15,982,215,812	-7.94%
21	40	Leather shoes	\$14,381,062,353	\$10,348,219,097	38.97%
2	41	Electrical supplies <1000V	\$14,327,440,681	\$12,283,754,547	16.64%
4	42	Video game consoles	\$14,269,169,892	\$11,995,042,056	18.96%
-21	43	Unwrought platinum in various forms	\$13,801,387,162	\$18,349,426,472	-24.79%
-7	44	Refrigerators, freezers	\$13,762,136,514	\$13,106,606,669	5.00%
11	45	Handbags, wallets	\$13,616,548,923	\$10,746,087,389	26.71%
7	46	Air-conditioning machines	\$13,476,417,357	\$11,215,650,949	20.16%
0	47	Amplifiers, speakers, microphones	\$13,355,486,763	\$11,943,163,950	11.83%
1180	48	Misc. aircraft parts	\$13,334,095,160	\$0	NA
-7	49	Catalytic converters, air, oil filters	\$13,282,410,432	\$12,354,766,041	7.51%
-18	50	Jewelry, parts	\$13,147,249,961	\$13,984,210,067	-5.99%

Source: WorldCity analysis of U.S. Census Bureau data



We may
be local.

But we can help
take your business
global.

We're your neighborhood bank who
can introduce your business to a
world of opportunities.

- Letters of Credit
- Documentary Collections
- Bankers Acceptances
- Export Financing
- Standby Letters of Credit

Member FDIC, TD Bank, N.A. | Equal Housing Lender 

Where do you want
to go? Give us a call.

1-800-937-8226 or visit us
at tdbank.com/globaltrade



America's Most Convenient Bank®